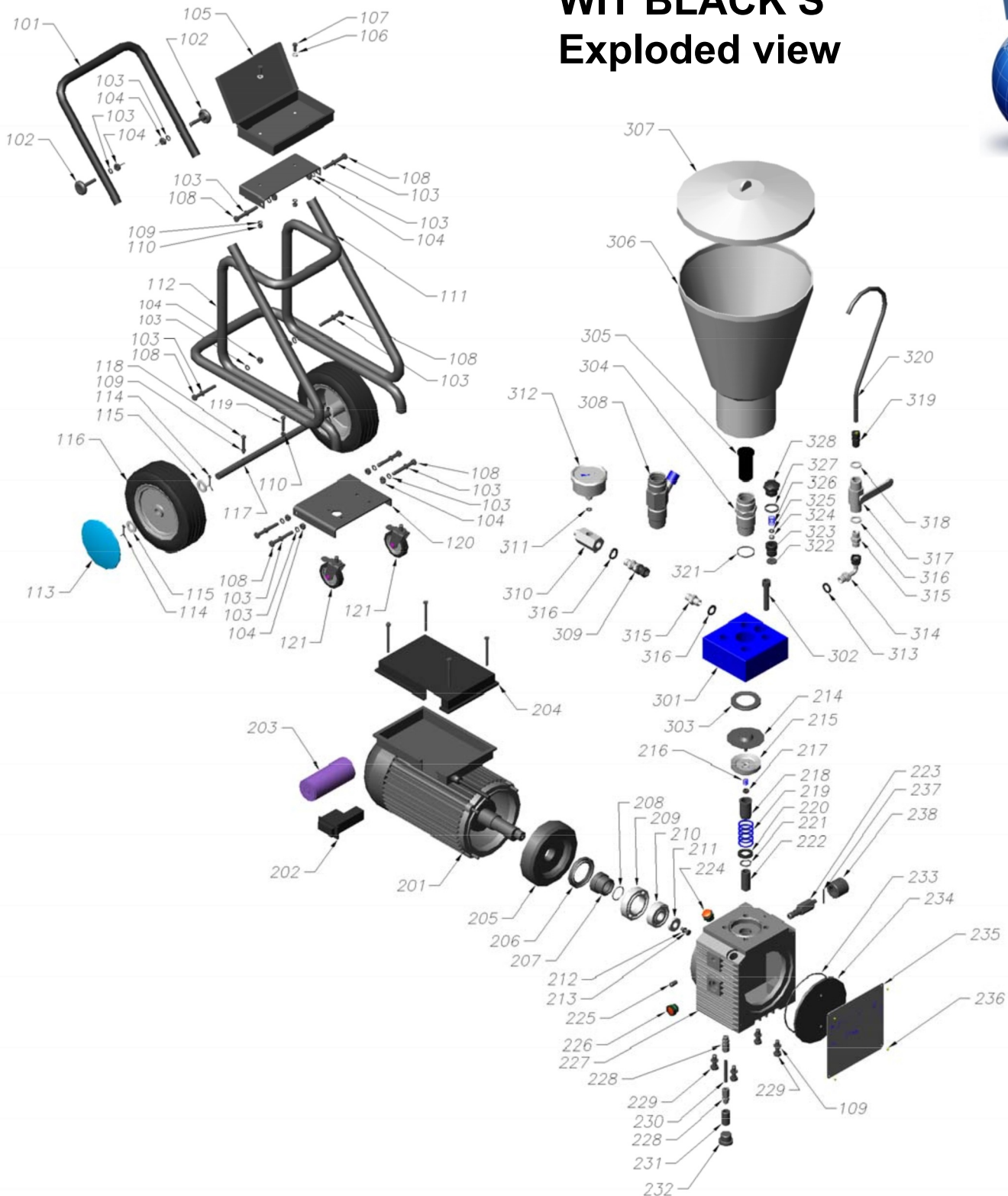


WIT BLACK S Exploded view



WIT BLACK MODEL S



POS.	CODE	DESCRIPTION
201	400060	ELECTRIC MOTOR, 1HP, 220V-50Hz, SINGLE PHASE
202	520011ETA	SWITCH WITH MOTOR CUT OUT
203	520013-20F	CAPACITOR 20 mF
204	520410	PLASTIC BOX FOR SWITCH
205	400061	STABILIZER
206	110051	CLOSING CAP FOR OIL (VITON)
207	400022	BEARING SEALING COVER
208	110053	O RING
209	400020	BENCH BEARING
210	400062	BEARING
211	400063	SEALING RING
212	130015	TCCE SCREW
213	130015	TCCE SCREW
214	470010	COMPLETE MEMBRANE
218	400070	LINER (CYLINDER)
219	400074	PISTON SPRING
220	400073	SPRING SEAT
221	400071	SEGER
222	400072	PISTON
223	155010	SETTING VALVE COMPLETE
224	110066	LOADED OIL PLUG
225	400033	PLUG
226	110068	LEVEL OIL
227	400010	HYDRAULIC GROUP SUPPORT
228	400028	STRAIGHT MALE
229	110070	CONNECTING-ROD
230	400029	FITTING OIL WITH COPPER HOSE
231	400030	SUCTION OIL VALVE COMPLETE
232	110067	DRAINAGE OIL PLUG
233	510056	HYDRAULIC GROUP SUPPORT OR
234	400067	HYDRAULIC GROUP SUPPORT COVER
235	510090	PLATE
236	110093	SCREW FOR COVER
301	440012	SQUARE ALUMINIUM ANTICORROSIVE HEAD
302	400082	TCCE SCREW HEAD
303	440015	MEMBRANE INSERT
304	150010	SUCTION VALVE
306	152080A	NYLON GRAVITY TANK (capacity 6LT.)
308	150110	SUCTION VALVE WITH RELEASE
309	195107	ADAPTOR
310	195042	FITTING FOR PRESSURE GAUGE
311	195027	WASHER
312	195045	HP 0-400 BAR PRESSURE GAUGE
313	195039	BONDED
314	400083	ADAPTOR 90° 1/4"
315	195002	NIPPLES 1/4"
316	195025	COPPER WASHER
317	195160	HP FLUID DRAIN VALVE
318	195025	COPPER WASHER
319	400084	FITTING FOR RETURN PIPE
320	400085	RETURN PIPE
321	150021	WASHER SEAL
322	160020	BALL SEAT SEAL
323	160021	COMPLETE BALL SEAT FITTING
324	160023	TUNGSTEN CARBIDE BALL DIAM. 11
325	160024	SPRING BEARING RING
326	160025	SPRING
327	160026	COPPER PLUG SEAL
328	160027	STAINLESS STEEL PLUG (COMPRESSION VALVE)
**	190022	PACKING OIL 1 LT.

WIT BLACK MODEL S



POS.	CODICE	DESCRIZIONE
201	400060	MOTORE ELETTRICO MONOFASE, 220V-50HZ, 1 HP
202	520011ETA-7	INTERRUTTORE CON SALVAMOTORE ETA7A
203	520013-20F	CONDENSATORE 20 mF
204	520410	SCATOLA PORTA INTERRUTTORE-CONDENSATORE
205	400061	VOLANO
206	400021	PARAOLIO
207	400022	DISTANZIALE VOLANO
208	400023	O RING
209	400020	CUSCINETTO DI BANCO
210	400062	CUSCINETTO ECCENTRICO
211	400063	ANELLO CUSCINETTO
212	400065	VITE RONDELLA CUSCINETTO
214	470010	MEMBRANA COMPLETA
218	400070	CAMICIA PISTONE (CILINDRO)
219	400074	MOLLA PISTONE
220	400073	GHIERA GUIDA MOLLA PISTONE
221	400071	SEEGER
222	400072	PISTONE
223	155010	VALVOLA REGOLAZIONE PRESSIONE COMPLETA
224	110066	TAPPO CARICO OLIO
225	400033	TAPPO
226	110068	SPIA LIVELLO OLIO
227	400010	CORPO IDRAULICO
228	400028	RACCORDO MASCHIO PER OGIVA
229	110070	PRIGIONIERO
230	400029	RACCORDO CON TUBETTO RAME
231	400030	VALVOLA ASPIRAZIONE OLIO COMPLETA
232	110067	TAPPO SCARICO OLIO
233	400066	OR COPERCHIO CORPO IDRAULICO
234	400067	COPERCHIO CORPO IDRAULICO
235	400043	ETICHETTA
236	110093	VITE FISSAGGIO ETICHETTA
301	440012	TESTA QUADRA ALLUMINIO
302	400082	VITE FISSAGGIO TESTATA
303	440015	SPESSORE MEMBRANA
304	150010	VALVOLA ASPIRAZIONE 80 MM
306	152080A	SERBATOIO NYLON capacity 6LT. (OPTIONAL)
308	150110	VALVOLA ASPIRAZIONE CON SBLOCCO (OPTIONAL)
309	195107	ADATTATORE
310	195042	RACCORDO PER MANOMETRO
311	195027	RANELLA
312	195045	MANOMETRO AP 0-400 BAR
313	195039	BONDED
314	400083	ADATTATORE 90° 1/4"
315	195002	NIPPLES 1/4"
316	195025	RANELLA RAME
317	195160	RUBINETTO A.P. FF 1/4
318	195025	RANELLA RAME
319	400084	NIPPLO 1/4 - M20x2
320	400085	TUBETTO RITORNO FLESSIBILE
321	150021	GUARNIZIONE A RONDELLA
322	160020	RANELLA NYLON VALVOLA COMPRESSIONE
323	160021	RACCORDO SEDE SFERA VALVOLA COMPRESSIONE
324	160023	SFERA METALLO DURO VALVOLA COMPRESSIONE
325	160024	BUSSOLA NYLON GUIDA MOLLA
326	160025	MOLLA CONICA BUSSOLA GUIDA MOLLA
327	160026	RONDELLA RAME TAPPO VALVOLA COMPRESSIONE
328	160027	TAPPO VALVOLA COMPRESSIONE
**	190022	CONFEZIONE OLIO 1 LT.