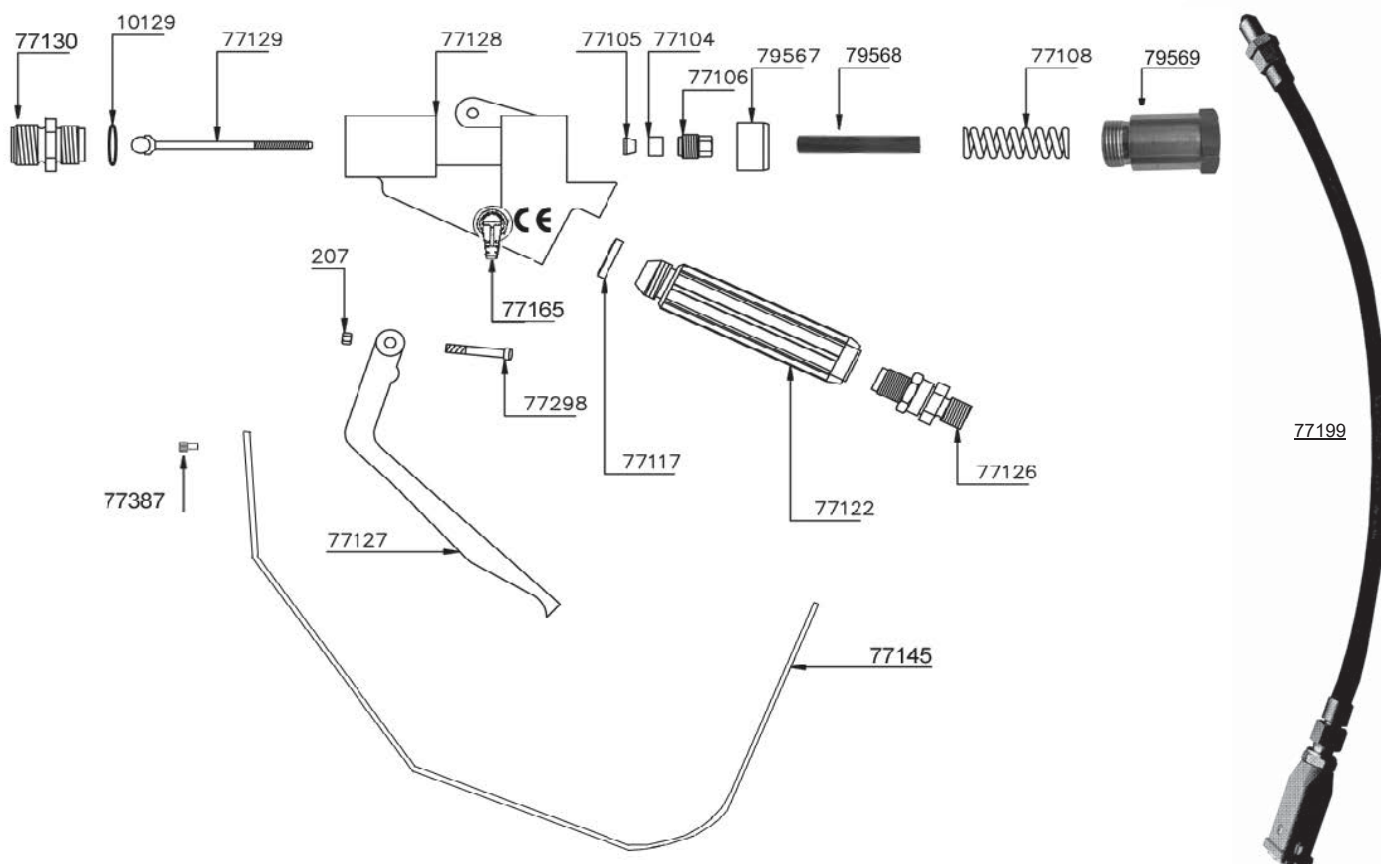


# EXPLOSION DRAWING - ÉCLATÉ



N.Ref.	Description	Q.ty	N.Réf.	Description	Q.té
<b>076800E</b>	<b>XXL-E airless spray gun</b>		<b>076800E</b>	<b>Pistolet airless XXL-E</b>	
067001	GUN BUTT FILTER 50 MESH	1	067001	FILTRE PISTOLET 50 MESH	1
067002	GUN BUTT FILTER 100 MESH	opt.	067002	FILTRE PISTOLET 100 MESH	opt.
067003	GUN BUTT FILTER 150 MESH	opt.	067003	FILTRE PISTOLET 150 MESH	opt.
067004	GUN BUTT FILTER 200 MESH	opt.	067004	FILTRE PISTOLET 200 MESH	opt.
000207	NUT	1	000207	ECROU	1
000707	REAR NUT	1	000707	ECROU POSTERIEUR	1
010129	COPPER SEAL	1	010129	JOINT EN CUIVRE	1
077104	SEAL SCREW, TEFLON	1	077104	PRESSE-ETOUPE TEFLON	1
077105	PRESSURE WASHER	1	077105	RONDELLE DE PRESSION	1
077106	SEAL SCREW	1	077106	VIS DU PRESSE-ETOUPE	1
077108	SPRING	1	077108	RESSORT	1
077117	HANDLE GASKET	1	077117	JOINT POIGNEE	1
077122	HANDLE	1	077122	POIGNEE	1
077126	SWIVEL XXL 1/2"	1	077126	RACCORD TOURNANT 1/2"	1
077112	HANDLE FOR SWIVEL 1/4" - M16X1,5	opt.	077112	POIGNEE POUR RACCORD 1/4" - M16X1,5opt.	
077115	SWIVEL M16X1,5	opt.	077115	RACCORD TOURNANT M16X1,5	opt.
077216	SWIVEL 1/4"	opt.	077216	RACCORD TOURNANT 1/4"	opt.
077127	TRIGGER	1	077127	DETENTE	1
077128	GUN BODY	1	077128	CORPS PISTOLET	1
077129	NEEDLE COMPLETE	1	077129	POINTEAU COMPLET	1
077130	DIFFUSER COMPLETE	1	077130	MANCHON COMPLET	1
077145	TRIGGER GUARD	1	077145	TRIGGER GUARD	1
077165	GUN TRIGGER LOCK	1	077165	ARRET-DETENTE PISTOLET	1
077298	SCREW	1	077298	VIS	1
077387	SCREW	1	077387	VIS	1
079568	THREADED SHAFT	1	079568	THREADED SHAFT	1
079569	THREADED SUPPORT	1	079569	THREADED SUPPORT	1
077199	XXL-E ELECTRIC SWITCH FULL KIT	1	077199	XXL-E ELECTRIC SWITCH FULL KIT	1